

# Global Welfare Summit 2016

## GWS2016

**Summit April 21 & 22**  
Gold Coast, Australia

**Master Class April 23**  
Brisbane, Australia

[gws.charltonbrown.com.au](http://gws.charltonbrown.com.au)



Surfers Paradise Marriott

## STRIKING THE BALANCE

RESPONSIBILITY AND INNOVATION  
IN CARE FOR THE AGEING



Social Welfare Corporation  
Shinko Fukushima



 **ACPET**  
AUSTRALIAN COUNCIL FOR  
PRIVATE EDUCATION AND TRAINING

CHARLTON BROWN®

#CBGWS2016

## About us

**A**t Shinko Fukushima our philosophy is to offer many good things to elderly, our future generations, as well as our local community neighbors. As a social welfare corporation, we support "the first stage" and "the last stage" of our customers' lives by offering them elderly care and childcare services. With the knowledge and experience we acquire from providing aforementioned services, we will also continue to strengthen our commitment and support to our local community neighbors.

私たちは、「たくさんのよきものを人生の先輩たちと後輩たち、そして地域に捧ぐ」という基本理念のもと、社会福祉法人としての公益性を活かし、お客様の人生の最初と最後を支える「保育」と「介護」のサービスを提供すると共に、そこで得た知識や経験、そして支えて下さる方々のご縁を「地域」に還元できるよう、取り組んでいます。

**A**s the aging of society and declining birthrates continue (in Japan), welfare needs are becoming more diversified. In order to properly meet these changes in society and the environment, we seek to continuously gather the best technology and knowledge the World has to offer and create services that fulfill the needs of our customers and our local communities.

今後、少子高齢化が更に進み、福祉ニーズはより多様化していきます。そういった外部環境の変化に柔軟に対応し、きちんと応えていくためにも、私たちは、国の内外、多世代、様々な業種…そんな「たくさんの」皆さまから優れた知識や技術（「よきもの」）を集め、時代に合ったサービスを提供していきます。

# WELCOME NOTE

Welcome to the *2016 Global Welfare Summit 2016: Striking the Balance: Responsibility and Innovation in Care for the Ageing*.

Communities across the world are struggling to meet the growing challenges of caring for ageing populations, and summits such as these play an important role for industry leaders to gather, exchange ideas and explore options to provide future care solutions.



CHARLTON BROWN® is proud to be the host of 2016 GWS and play a part in bringing some of the world's elder care leaders together for just the second time in three years.

Japan's Shinko Fukushikai hosted the inaugural Global Welfare Summit in 2013, bringing together specialists from all over the world to one venue to exchange ideas and offer solutions. It was the first of what will be many future international conferences to address this important issue.

As CEO of CHARLTON BROWN®, I consider this summit a great and important opportunity for Queensland and Australia to share knowledge and develop world-best practices that will benefit many people over many years.

Australia is well placed to be the second host due to its reputation as an international leader in the areas of elder care, palliative care and dementia care; and its geographical location to the regions most in need.

By 2055 nearly two thirds of the world's population aged over 65 will be living in the Asia Pacific region. Therefore, it is an exciting time for Australia and CHARLTON BROWN® to engage and contribute to the efforts of training carers who can bridge the gaps in countries that currently struggle to place sufficient professionals in the field.

Your support and leadership is particularly valued and I hope this experience will guide you and help us prepare for the many challenges before us.

Throughout this conference, I ask you to stay engaged, be proactive and help us shape the future to *Strike the Balance through Responsibility and Innovation in Care for the Ageing*.

Thank you



Kay Ganley  
CEO and General Manager  
CHARLTON BROWN®

**Please use our twitter handle #CBGWS2016 while at the summit.**

**While at the summit all delegates have free WiFi on the conference floor. There is no password. Just select 'Marriott' in networks.**

The Global Welfare Summit is a project enhancing the quality and attractiveness of the "Welfare of the World" and "Welfare of Japan", with specialists of welfare invited from overseas countries introducing initiatives and exchanging opinions with specialists working at the forefront of welfare in Japan.

Seiko Adachi, Shinko Fukushikai Annual Report 2014

## Accessing interpreters at GWS 2016

As GWS is a global conference we are providing access to presentations in a number of languages.

- Delegates from **China** will be provided with a personal interpreter.
- Delegates requiring **Japanese** will have simultaneous interpreters using their own system.
- Delegates requiring **Korean** will be provided simultaneous interpreting that will be transmitted over a dedicated WiFi network at the conference venue.
- **IMPORTANT:** English speaking delegates will also need to access the WiFi network for the presentation by Oh Duk Man on Friday, as he will be presenting in Korean.

To listen to the WiFi interpreting streams delegates will need to use their smartphone loaded with a free app, and choose the stream in the chosen language.

### How it works:



### Your WiFi device:

You must use one of these devices

- iPhone, iPad, Android phone or Android tablet (any brand but check the sound quality)

You will also need headphones or ear-buds to plug into the phone or tablet.

Connect your device to the "Interpreter\_Careers\_Australia" WiFi network.

### Application



The interpreters will be available using a free app called 'Be On Air' iPhone or iPad download from App Store.  
Search for 'beonair' in your store



Interpreting services at GWS is proudly sponsored by Careers Australia





# INTERNATIONAL SPEAKERS

## DR SURESH KUMAR PALLIATIVE CARE

Institute of Palliative Medicine



Dr Suresh Kumar has been involved in the Palliative Care scene in India and abroad for the last 22 years. He is now the Technical Advisor, Institute of Palliative Medicine. He is involved in establishing community based palliative care services in Pondicherry, West Bengal, Tamil Nadu and Manipur in India. He has lectured extensively in many countries. He is currently involved in developing palliative care services in Thailand, Indonesia and Sri Lanka. He writes regularly for international palliative care journals and has contributed to chapters in the Oxford Text Book of Palliative Medicine.

---

## DR EMI KIYOTA CULTURE CHANGE

Ibashi



Dr Emi is an environmental gerontologist and organisational culture change expert, focused on initiatives to improve the quality of the built environment for healthcare settings and long term care services for elders. Emi is a consultant to numerous age-friendly design projects for senior housing, hospitals, and clinical-care centres in the United States, Europe, Asia and Africa. Dr. Kiyota is also a frequent speaker on these issues to audiences of both academics and practitioners, including the World City Summit, World Bank, Moscow Urban Forum.

---

## STEVEN CHANG GLOBAL WORKFORCE

Weihai Lianqiao International Cooperation Group



Steven is Manager of the Department of Overseas Employment in Weihai, China. Established in 1997, with the approval of Ministry of Commerce of the P.R. China, Weihai Lianqiao International Cooperation Group, is a large-scale foreign-oriented group enterprise, business scope covering the fields of imports and exports, overseas project contracting, foreign labor services, industrial science and technology.

LIC has successively won more than one hundred national, provincial and municipal honorable titles: well-known trademark of China, trustworthy company of China, national model staff family, advanced foreign trade company in Shandong, most development potential private enterprise in Shandong, civilized trustworthy private enterprise in Shandong. CHARLTON BROWN® has a training agreement with Weihai Lianqiao International Cooperation Group to deliver their aged care program.



## **TAKUICHI NISHIMURA** PH.D CARE ROBOTICS

### Artificial Intelligence Research Center



Takuichi Nishimura Ph.D. has a background in pattern recognition for user interface and information retrieval and community support systems. After graduating from Tokyo University in 1992, he worked as a researcher for three organizations and joined Artificial Intelligence Research Center, AIST, Japan in 2015. He has been working on employee augmenting technology for care facilities, hospitals, health promotion and education. His interest is in both methodologies and technologies to realise employee-driven design to improve the daily workflow, innovate the service model and induce behavior change of all the people related to the care service. He has been leading technology research teams for elderly-care for five years and also working for a national project that develops care robots lead by METI, Japan.

---

## **OH DUK-MAN** PH.D INTEGRATED HEALTH

### Seoul Senior Towers



Dr Oh's company develops and manages several aged care facilities in South Korea, including private nursing homes, elderly housing, hospitals and integrated health and healing resorts.

With his nation experiencing a growing aged care problem that is predicted to peak in 2050, he believes it is important to learn from the experiences of CCRC-developed nations such as the United States and Japan. He is interested not only in simple aged-care housing and hospitals, but also “silver towns” or communities of aged people, that consider the broader needs of residents other than just care and functionality.

---

## **ANNE HOLM** IN HOME CARE

### Bellinge



Anne runs “Bellinge”, a welfare academy that provides training for the environment and welfare in Denmark. It offers a consulting service, guidance and lectures in the field of welfare equipment and housing renovation at facilities and hospitals.

She introduced the very solid welfare system and social policy of Denmark, a country with said-to-be the happiest people in the world. The country also has legislation supportive of care workers and in-home carers to respect the users' self-determination and promote an active life.



# Your global partner

Trade & Investment Queensland (TIQ), the Queensland Government's global business agency can help you to tap into opportunities across agriculture, infrastructure, mining and resources, education and our growing knowledge-based industries.

With access to abundant resources and unrivalled expertise, Queensland's trade and investment potential is unlimited. Queensland is ideally located at the international cross road of the Asia Pacific, established international markets and investment hot spots.

## We can help your business grow

TIQ matches you with buyers, investors and trading partners from around the globe. To be connected with the appropriate partner, contact Rohini D'Souza, Senior Trade and Investment Officer, on +61 7 3514 3077 or email [rohini.dsouza@tiq.qld.gov.au](mailto:rohini.dsouza@tiq.qld.gov.au)

## Connect. Be Connected



+ 61 7 3514 3147



TradeandInvestmentQld



[www.tiq.qld.gov.au](http://www.tiq.qld.gov.au)



@tradeinvestqld



[tiq.info@tiq.qld.gov.au](mailto:tiq.info@tiq.qld.gov.au)



Trade & Investment Queensland



**Queensland**  
AUSTRALIA  
endless opportunities

**TIQ** Trade & Investment  
Queensland  
AUSTRALIA



TIQ-16-129





# KEYNOTE SPEAKERS

## BERNARD SALT



Bernard Salt is widely regarded as one of Australia's leading social commentators by business, the media and the broader community. He is a high-profile Melbourne-based Partner with the global advisory firm KPMG where he founded the specialist advisory business, KPMG Demographics.

Bernard writes two weekly columns for The Australian newspaper that deal with social, generational and demographic matters. He is an adjunct professor at Curtin University Business School and he holds a Master of Arts degree from Monash University. Bernard Salt is one of the most in-demand speakers on the Australian corporate speaking circuit and has been so for more than a decade. He is perhaps

best known to the wider community for his penchant for identifying and tagging new tribes and social behaviours such as 'the seachange shift', 'the man drought', 'pumcins' and 'the goats cheese curtain'. Bernard has popularised demographics through his books, columns and media appearances for 25 years. His body of work is encapsulated in six popular best-selling books beginning with The Big Shift published in 2001 through to his most recent work More Decent Obsessions published in 2014.

---

## DR NORMAN SWAN



Dr Norman Swan hosts The Health Report on ABC Radio National, and Tonic on ABC News24. He joined the ABC and has hosted many programmes including Life Matters, Radio National Breakfast as well as Health Dimensions on ABC Television. He has consulted to the World Health Organisation and co-chaired a global meeting of health ministers in West Africa in 2008.

---

## VAL FRENCH AM



Val French is an active social reformer and tireless worker for the rights of older people. In 1992, Val founded OPSO – Older People Speak Out, a Queensland-based, voluntary, non-profit organisation that provides lobbying services on behalf of older people. Tapping into the expertise of retired media, advertising, and communication specialists, OPSO encourages the media to portray the positive contributions older people make. Val's focus has always been on creating a better life for everyone, regardless of gender or social status.





## TIM RUSSELL



Tim founded Retire Australia in 2005 and built it to be the fourth largest retirement village owner/operator in Australia with 4000 units under management. In December 2014 that business was sold to Infratil Ltd and NZ Super for \$640 million. In June 2015 Tim left Retire Australia to start Five. Good.Friends. FGF is a business looking to create a service offering for ageing Australians to help them stay in their homes and remain connected to family, friends and their community, enabling them to continue to do the things they love.

---

## DANIELLA GREENWOOD



Daniella is National Strategy and Innovation Manager for Arcare. Key areas of responsibility include change management; research; stakeholder engagement; and the development and implementation of Arcare's Relational Approach and Dedicated Staff Assignment Model. Daniella is a published author and has presented the results of her work at the Alzheimer's Disease International conference.

---

## PROFESSOR JUSTIN BEILBY



Professor Justin Beilby is currently the Vice-Chancellor at Torrens University Australia. With over a decade of experience as Executive Dean, Professor Beilby is a qualified practicing General Practitioner who has been widely recognised as a leader in primary care and general practice reform in Australia for the last twenty years. He has been heavily involved in clinical and policy related research in the areas of workplace planning, primary care financing, chronic illness and new models of aged care including the very frail.

---

## LENA GAN



Lena is the Program Director for the Master of Ageing, University Melbourne. This is a unique inter-disciplinarian program designed to prepare students to become leaders in the emerging field of Ageing. Lena understands the global challenge to meet the need for a skilled workforce in this sector and she is seeking solutions. She holds a Master of Environment and Project Management Professional qualifications. Lena worked for eight years in Paris, Barcelona and Brussels as a creative director in the marketing and design sectors with multi-national clients on pan-European projects. She has developed community plans and Positive Ageing Accords, facilitated forums around ageing, and undertaken reviews in the ageing sector for local government. Areas of particular interest include philosophy, interdisciplinary practice, sustainability, the arts and ageing.



# Become a leader in the field of ageing

## Ageing in Society - *Online Graduate Courses*

Across the planet, the proportion of people aged over 60 years is growing faster than any other age group. Population ageing is a global trend, which is bringing with it great challenges and opportunities and an accelerating demand for a skilled workforce with specialist knowledge in the field of ageing.

The University of Melbourne's Ageing in Society program is a unique interdisciplinary suite of online graduate courses incorporating new thinking, knowledge and ideas designed to produce leaders and change agents in the field of health and ageing. Students will learn from academics and leading industry experts in public health, medicine, social work, architecture, design, engineering, business and economics, government and the arts, from Australia and around the world. Students will study the most significant trends and challenges in ageing, and develop ways to understand and address them.

You'll study online with Australia's number one university<sup>†</sup>, and be able to choose from a suite of courses, starting with a Specialist Certificate that can be completed in three months, continuing up to a full masters degree.

**Applications to study in Terms 3 and 4, 2016 are now open.**

To find out more: [online.unimelb.edu.au/ageing](https://online.unimelb.edu.au/ageing)  
or email: [study-online@unimelb.edu.au](mailto:study-online@unimelb.edu.au)

# SHOWCASES

## Thursday afternoon

### Written by

**Lisa Hee (BN, GDip(Ger). MEd (Prof).**

**MMgt (Aged Care)...**

Executive Director of Elite Health Care Australia.

Director of Healthy Ageing and Dementia Programs,

CQU.

**Presented by Viv McDonald**

Australian practices and experience for providing care for people with dementia.

### Followed by



Playabout Productions, the brainchild of Australian award-winning actors, Therese Collie and Tim Mullooly, who bring poetry, song and important pieces of Australian literature to life in a highly entertaining theatrical presentation.

Their shows are particularly appropriate for audiences of people in aged care settings (particularly with dementia) and their families who benefit from seeing their history and memories acknowledged and celebrated.

Therese and Tim's performance style is direct and warm, moving their audiences to laughter and tears.

**Sponsored by Louise Booth Consulting**

## Friday afternoon



Mask Ed: An innovative teaching strategy that teaches students to care for the older person



## PROFESSOR KERRY REID-SEARL



Kerry Reid-Searl has been involved in the CQUniversity undergraduate nursing program for the past 21 years. Together with her passion for nursing and nursing education, Kerry also has a strong interest in simulation techniques. Her current work is focused on strategies for 'the teacher in role' and through this she uses innovative props to create interesting and realistic learning spaces. In particular, she works with silicone props and has designed a unique approach to enable students to experience humanistic simulation experiences before being exposed to practical placements.



National Conference 25-26 August **APIEF** 24 August

# ACPET 2016

Hobart, Tasmania



**Early Bird  
Registration and  
Call for Abstracts  
now open**

The Australian Council  
for Private Education and  
Training (ACPET) is pleased  
to invite you to Hobart this  
August for:

**Asia Pacific International  
Education Forum -  
Wednesday 24 August**

**ACPET National Conference  
- Thursday 25 &  
Friday 26 August**

**Connecting Knowledge, Skills and  
Futures Through Innovation**

**[www.acpet2016.com.au](http://www.acpet2016.com.au)**



Helene Stewart  
Conference Manager  
Leishman Associates  
Phone +61 6234 7844  
Email: [helene@laevents.com.au](mailto:helene@laevents.com.au)



# FACILITATORS



## DUGALD ANTHONY

---

Prior to joining Austrade in 2007, Dugald held senior customer management roles living and working in three International markets. For the past few years he has been working as a Senior Trade Adviser in the International Health Trade Team working with Australian Clients and Austrade's International Health team to identify, promote and support Senior Living and Health (Aged Care) export opportunities.



## LINDA BROWN

---

Linda is CEO Laureate Australia, Think Education, President Torrens University and a member of Blue Mountains Board. She has more than 23 years of global management experience in the education sector in Australia and the United Kingdom. Her background is diverse incorporating leadership experience in the areas of private, public, government, social enterprise, commercial and education. Linda has balanced her education, government and business experience with social advocacy and entrepreneurship; examples include Operation Raleigh, had leadership responsibility for Princes Trust Youth Initiatives and did a walk in the Himalayas with 15 Australian business women for Kids Helpline (Australia), she talks globally on female diversity and

education for all. Linda has represented Australia for six years at APEC Women Leaders' Conference in Asia Pacific and was identified by Management Today as one of "25 Australian women to watch".



## LADY JANE EDWARDS AM

---

Jane (Brumfield) Edwards is a businesswoman and communications strategist, with a distinguished career spanning more than 35 years. A former Canberra journalist, Jane is a specialist in issues and reputation management. She advises senior executives and community leaders around Australia on personal profiling and business-critical issues in the public arena. Jane founded and owns the national BBS Communications Group and is an Adjunct Professor at the University of Queensland's school of Journalism and Communications. Jane is appointed to numerous government and business boards and committees including, The Lord Mayors Business Advisory Board, the City of Brisbane Investment Corporation, the National Breast Cancer Foundation Governance Board,

the Property Industry Foundation Governance Board and the French-Australian Chamber of Commerce and Industry Executive Board. Since 2001, she has been the Honorary French Consul for Queensland. She is a member of the Order of Australia, and holds the Chevalier de L'Ordre National du Merite (Knight of the French National Order of Merit).



## REBECCA HALL

---

Rebecca Hall is a well regarded international education professional with 20 years experience working in Australia's international education sector. She has held senior leadership roles with universities, VET providers, industry peak bodies and government. Rebecca holds a Masters of International Relations, Graduate Certificate in Higher Education and a Bachelor of International Business Relations. She is a board member of the International Education Association of Australia (IEAA) and AFS Australia and is a passionate advocate for the value of a globally engaged education and training sector. She is proud mum of two daughters, Emi and Mia.



## JACYL SHAW

Jacyl is Director of Engagement of the University of Melbourne's Carlton Connect Initiative, an innovation focused district of world class researchers, industry, government, startups and community organizations. She has worked as a senior international strategic advisor, corporate lawyer, Supreme Court Judge's Associate, in practice management for a national law firm and several not for profit organisations focused on Australia – Asia relations. She has a BA, LLB, LLM and Masters of Enterprise



## ADAM STEVENSON

Adam is the General Manager for Priority Sectors and Client Services within Trade & Investment Queensland (TIQ). In this role the scope of facilitation includes servicing the interests of international and interstate investors, Queensland's regions and exporters in priority industry sectors. Adam is focused on assisting partners build upon capabilities and opportunities to benefit from investment and export opportunities. Starting his career in the private finance sector, Adam moved into government executive leadership positions, steering the course for a range of prominent agencies. Adam has held a range of senior executive positions in the last 10 years in the areas of employment service delivery, ICT strategy, Indigenous economic participation, corporate services, strategic policy and planning, industrial relations, training, and workplace health and safety. Adam has proudly led Queensland's Investment Attraction division to secure more than \$692 million in capital expenditure and more than 2400 new jobs over the past two years in Queensland.



## CHERYL VARDON

Cheryl is the Principal Commissioner, Queensland Family and Child Commission. She has a distinguished career in education, community and children's services with a track record of leadership and expertise in the oversight of policy into strategies and outcomes. Having held Chief Executive and senior management positions in private, public and not-for-profit organisations she is highly experienced in representing Australian governments, companies and organisations both nationally and internationally.

## COMPLIMENTARY

### Crèche and Babysitting Services

Complimentary crèche and babysitting services for all delegates or exhibitors – either day or night or a combination of both. This can be pre-booked through the CHARLTON BROWN® Agency.

Please email your requirements to [agency@charltonbrown.com.au](mailto:agency@charltonbrown.com.au) or phone (07) 3216 0288





# PANELISTS



## ANTHONY BAKER

---

Anthony Baker has recently returned to Australia after spending over three years as one of the 12 Executive Directors of the Asian Development Bank (ADB). The ADB is a multilateral development bank operation in Asia and the Pacific. Anthony was the representative on the ADB Board for: Australia; Azerbaijan; Cambodia; Georgia; Hong Kong, China; Kiribati; Federated States of Micronesia; Nauru; Palau; Solomon Islands; and Tuvalu. Before his appointment to the ADB in Manila, Anthony spent 25 years working in senior roles in the Australian and Victorian Governments including in the Federal Departments of Prime Minister and Cabinet and of Finance and the in Victorian Departments of Premier and Cabinet and of Treasury and Finance. Anthony's experience on the Board of ADB allows him to offer

delegates a unique perspective on recent policy developments at the Bank relevant to engagement with ADB and its development role in the region.



## MATTHEW MOORE

---

Matthew Moore is the Manager of IUIH Home Support. He has been managing Indigenous community aged care services for more than 20 years. He is Manager of IUIH Home Support, which was established in 2013 by the Institute for Urban Indigenous Health to provide household and home support services to Aboriginal and Torres Strait Islander people in South East Queensland.



## KATH CURRY

---

Kath delivers leadership and management skills developed in the tertiary education, health and government sectors. She is adept at both strategic and operational levels, which makes her a valuable leader to drive and implement change and grow business. Her career in the vocational sector spans two decades. She most recently has been displaying her qualities as VET College Dean at Victoria University, a dual sector institution in Melbourne's western region and is now looking for new opportunities.

A capacity to engage with both the big picture and the important details equips Kath to identify and develop opportunities. She is an innovator who makes things happen and inspires others to follow. She is respected for challenging and encouraging staff to develop and demonstrate their innovation capability and entrepreneurial skills. Underpinning all of

Kath's activities is integrity and a commitment to quality. She values process, evidence and rigour as important tools to optimise business performance and protect reputation.



## DAVID CONRY

---

David Conry was awarded the honour of Queensland's Australian of the Year in 2007 and Social Entrepreneur of the Year for his work in creating the organisation, Youngcare. Affected personally, David awoke the community to the appalling situation of thousands of young people with high care needs residing in aged care facilities. Youngcare, in ten years, has raised over 60 million to develop several residential complexes—with several more in construction or planning. These complexes provide dignity, appropriate care and a lifestyle for young people with high care needs. Youngcare has launched and run a national 'at home' care grant program and a national service called 'Youngcare Connect', providing thousands of individuals and their families a source of information and guidance for when they are struck by the tragedy of illness or injury.



## MURRAY DAVIS

---

Murray Davis was appointed as Queensland Government Trade & Investment Commissioner to Taiwan in January 2015. He is responsible for representing the state of Queensland in Taiwan with a primary focus on the promotion of trade and investment between Taiwan and Queensland. Prior to taking up this position in Taiwan, Murray had a long career both as an Australian diplomat, and with the Queensland government, engaged in the promotion of international trade and investment. Murray learned Chinese in Taiwan 1986 – 1987 and also in Beijing in 1988 – 1989. He joined the Australian Trade Commission in 1993 and served as senior diplomat in the commercial section of the Australian Consulate General in Guangzhou 1994 – 1997 and the Australian Embassy in 1997 – 2000.



## PETRINA FRACCARO

---

As General Manager CHARLTON BROWN®, Petrina Fraccaro is a key member of the team leading one of Australia's foremost community services vocational training organisations and employment agencies. As part of the leadership team, Petrina provides strategic input that helps shape the development and alliance of partnerships to grow the CHARLTON BROWN®. Petrina's work contributes to the development of a stronger vocational education and training and care industry in Australia, and a strengthened international profile for CHARLTON BROWN®. She is passionate about supporting students on their education pathways through her work on the Global Linkages Program, an initiative of the CHARLTON BROWN® Foundation. She has presented at conferences both domestically and internationally and was a finalist in the Lord Mayor's Business Awards in 2014.



## LYNNE FOLEY OAM

---

Lynne is an influential educator with extensive experience across all sectors - schools, TAFE and University. She is CEO PotentialPlus Solutions, Executive Coach, and Specialist Consultant in Organisational Leadership and Cultural Change across government, training organisations and business. Lynne is committed to building strong and successful organisations and communities, by empowering individuals and teams, through leadership development.



## MARCUS GANLEY

---

Marcus Ganley is Executive Director, Legal and Corporate Affairs at CHARLTON BROWN. Before returning to CHARLTON BROWN in April 2015, Marcus spent 14 years working in the Australian, New Zealand and South Australian Governments. Between 1996 and 1997 Marcus was a Commonwealth Scholar from Australia at the University of Auckland, where he completed a Master of Arts with first class honours. He also holds a Bachelor of Laws (First Class Honours) from Victoria University of Wellington and was admitted as a barrister and solicitor of the High Court of New Zealand in 2004.



## **DR TOBY GANLEY**

---

Toby is a confident and determined professional, with skills in relationship management, analysis, communication, influence and advocacy. He has a academic background in political theory, immigration, race and national identity, and policy experience in the New Zealand public service and the UK third sector. He is also a semi-amateur DJ, having played gigs in Australia, Colombia, New Zealand, and the UK.



## **ROSS HUMPHRIES**

---

Ross is Managing Director of Genbridge. Recently they commissioned and then operated the first Australian aged care facility located in a high rise over 50's apartment building located at Southport on the Gold Coast. Ross is also Chair of the steering committee for the National Centre for Neuroimmunology and Emerging Diseases at Griffith University.



## **PROFESSOR LIZ ISENRING**

---

Professor Liz Isenring is an advanced accredited practicing dietitian (AdvAPD) with a passion for improving the nutritional care and quality of life of older adults. Professor Isenring sits on the Board of the Maggie Beer Foundation and supports the concept that good nutrition has a positive impact on health and longevity. She promotes an 'appetite for life' mentality where people of all ages, but particularly older Australians, use quality, seasonal cooking every day to improve their brain health and general wellbeing.



## **PAT MCINTOSH AM, CSC**

---

Pat McIntosh was born and raised in the Lockyer Valley in Queensland and was educated at Downlands College, Toowoomba. Pat served in the Australian regular Army for 27 years. He established a financial planning business in Brisbane and worked in the business until 2015. Pat joined the board of RSL Care in October 2010 and was elected Chairman in July 2012 after developing and implementing a significant business transformation program. When RSL Care merged with RDNS (Royal District Nursing Society) in October 2015 Pat was appointed as the joint Chairman. Pat was awarded a Conspicuous Service Cross in 1995 for service in command of the Australian Medical Support Force in Rwanda and was appointed as a Member of the Order of Australia in 2002.





## PETER MCMAHON

---

With a 20-year senior-level human resources management career, Peter is recognised for his expertise in leadership development, cultural change, employee engagement and business efficiency. Before joining Blue Care, one of Australia's largest community health and residential care providers, he worked for Sodexo out of Paris and Washington DC with responsibility for group and global training in more than 85 countries.



## DINA RANIERI

---

With 29 years' in community care, aged care, management and business development, Dina Ranieri has vast experience working with people from culturally and linguistically diverse backgrounds. Director of Co.As.It. Community Services since 1998, Ms Ranieri oversees a range of programs that promote diversity in aged and community care in culturally and linguistically diverse communities. These include crisis intervention, advocacy, community education, counselling, and support for frail elderly and people with disabilities and their carers.



## PROFESSOR JEFFREY SOAR

---

Professor Jeffrey Soar holds the Personal Chair in Human-Centred Technology at the University of Southern Queensland. Jeffrey came to academia from an executive career in health in Australia and New Zealand. He researches informatics for ageing which includes smart homes, intelligent software for smart phones, data analytics and technology innovation.



## JIM VARGHESE AM

---

Jim Varghese is the Executive Director (Business Development for the Australia India Institute) Chairman and owner of the Leadership Company Qld Pty Ltd and Director of the Springfield Land Corporation (SLC) since 2008. Jim has over 30 years' experience as a Chief Executive in leading government agencies covering Transport, Main Roads, Education, Training, Employment and Primary Industries in both the Victorian and Queensland public sector. He was awarded the Centenary Medal for services to the Public Sector and in 2009 was awarded an Order of Australia for Services to Public Sector Reform and Services to the Community. Jim has been granted the award of Fellow of these professional organisations: Certified Practising Accountant (CPA), Australian Institute of Management, Royal Institute of Public Administration and Australian Marketing Institute. He is a member of the Australian Institute of Company Directors.



## KIM WAINWRIGHT

---

Kim Wainwright is business owner and skills specialist who is focused on industry based solutions to the pending aged care skills-shortage crisis. Kim is co-founder of Charlton Brown Care a leading provider of personnel services to the aged care sector. Kim also owns a technologies company that specialises in in-cloud workplace training delivery to personnel in highly regulated industries such as the health and aged care sectors. Earlier in her career Kim worked in high level public policy including holding a key role in Queensland's Billion Dollar Skills Plan development and implementation.



## TREVOR GANLEY

---

Trevor Ganley has had a lifelong passion for the care industries. In the 1960s he worked as a youth worker and social worker for the YMCA in Brisbane. The 1970s saw him continue as a YMCA youth worker in New Zealand, before training as a professional community corrections officer with the New Zealand Parole Service. On returning to Australia in 1984, Trevor continued his work in community corrections finishing his time as a Senior Area Manager for Queensland Corrections. Trevor's retirement from Corrections allowed him to focus his energies on CHARLTON BROWN®. As well as Chairing the CHARLTON BROWN® Board, Trevor also provides executive leadership to CHARLTON BROWN®'s Nanny and In-home Care agency, which provides carers for the young, the elderly and those with disabilities.



# GWS FOUNDER

## SEIKO ADACHI

---

**Executive Head, Social Welfare Corporation Shinko Fukushimai**

**Born in Fujisawa City, Kanagawa Prefecture, Japan**

**Graduated from University of Wisconsin, U.S.A.**

**B.A. in Sociology and Gerontology**

Joined Social Welfare Corporation Shinko Fukushimai in 2000, after working for a pharmaceutical company. Experienced Facility Manager of Special Elderly Nursing Home

Cross Heat Sakae Yokohama, Manager of Yokohama City Byobugaura Community Care Plaza. Appointed to current position in April 2010. She has been operating 38 elderly care and 8 child care facilities. In June 2012, Seiko successfully organized an original musical performance about a site of elderly care in front of an audience of 2,200 people. 202 performers are all non-professionals, i.e. elderly/child care staffs and their families, customers, children of daycare centers, business partners, etc. It was followed up by the Global Welfare Summit in Yokohama in November 2013, during which she invited welfare specialists from 9 different countries and 733 participants from medical, welfare, and other fields. In March 2014, she was selected together with Masue Katayama, founder and senior managing director, to Schwab Social Entrepreneurs 2014 for her excellent entrepreneurship.

Also in August 2014, Shinko Fukushimai was honored to receive the Funai Soken Great Company Award Grand Prize, selected among more than 5,000 Japanese companies. Restless efforts since its establishment in creating new and out-of-the-box business models were highly valued as "the leader in caregiving business and continuous innovation deserving global respect and recognition."

# PROGRAM

## Wednesday 20 April

**Poolside Cocktail Reception 5.15 - 7.15pm** (included in delegate price)

**Master of Ceremonies:** Petrina Fraccaro

- 5.30pm Welcome to Country, Yugambah People
- 5.40pm Address by Mayor of the Gold Coast, **Tom Tate**
- 6.00pm Address by Sponsor - BUSY At Work  
**Chris Dale**, General Manager - Employment Services

**Followed by:**

Introduction to Native Australian Animals  
Wild Rangers Wildlife Encounters  
Koala from Dreamworld  
Gold Coast Mermaid

Sponsored by **BUSY At Work**

**International Speakers Dinner** (invitation only) **sponsored by VETEA**



Program is subject to change without notice.





# CONFERENCE DINNER

## Thursday Evening 21 April - DAY 1

(Cost: included in delegate price)

Sponsored by **TAFE Queensland**

Master of Ceremonies - **Marcus Ganley**

**Music: Jazz Quartet from JMI**

### VENUE

Surfers Paradise Marriott Resort and Spa  
in the Marriott Ballroom

### TIME

6.30pm for 7.00pm - 10.30pm

### SPONSOR SPEAKER

Debbie Blow

Director of Faculty and Executive Leader Health and Nursing

### KEY NOTE SPEAKER

Tak Adachi

Trade and Investment Commissioner for Japan, Trade and Investment  
QLD

### SPECIAL GUEST

The Hon. Robert Borbidge AO

# PROGRAM

Program is subject to change without notice.

## Thursday 21 April - DAY 1

2016 GWS MC Len Bytheway,  
CHARLTON BROWN® Head of School

7.30am *Registrations Open*

9.00am Welcome Address by **Seiko Adachi**  
(Shinko Fukushimai - founder of GWS)

9.15am **Dr Norman Swan** - Setting the scene on Aged Care in Australia

9.30am **Dr Takuichi Nishimura, Ph.D (Japan)**  
**Artificial Intelligence - Robotics and Technology**

10.00am Panel discussion  
**Facilitator:** Dugald Anthony **Panelists:** Kath Curry, Ross Humphries, Lena Gan

10.45am *Morning tea - John Paul College Choir*

11.05am **Dr Suresh Kumar (India)**  
**Palliative Care**

11.35am Panel discussion  
**Facilitator:** Professor Justin Beilby **Panelists:** John Potts, Dina Ranieri,  
Dr Norman Swan, Kay Ganley

12.20pm *Lunch Break, Poster Presentations, Exercises with Restart EP*

1.20pm **Dr Emi Kiyota, Ph.D (U.S.A)**  
**Creating a culture of the person directed care and environment:  
Elders as Agents of Change**

1.50pm Panel discussion  
**Facilitator:** Lady Jane Edwards AM **Panelists:** David Lane, Viv McDonald,  
Jim Varghese, Seiko Adachi

2.35pm *Afternoon Tea*

2.55pm **Tim Russell** **Professor Justin Beilby**  
**Five Good Friends** **Frailty: The New Age Care Challenge**

3.25pm Panel discussion  
**Facilitator:** Jacyl Shaw **Panelists:** Matt Moore, Kim Wainwright,  
Anthony Baker, Murray Davis

4.10pm **Showcase** - Australian practices and experience for providing care for people  
with dementia presented by Viv McDonald.  
Followed by a presentation by Playabout Productions.

4.30pm Closing - **Dr. Norman Swan and Dr Toby Ganley**

# PROGRAM

Program is subject to change without notice.

## Friday 22 April - DAY 2

2016 GWS MC Len Bytheway,  
CHARLTON BROWN® Head of School

7.30am Registration

8.45am **Val French AM - Older People Speak Out**

9.00am **Steven Chang (China) Global Workforce**

9.30am **The Hon. Coralee O'Rourke MP,**  
Minister for Disability Services, Minister for Seniors and Minister  
Assisting the Premier on North Queensland

9.45am Panel discussion

**Facilitator:** Adam Stevenson **Panelists:** Jeffrey Soar, Daniella Greenwood,  
David Conry

10.30am **The Hon. John Paul Langbroek MP**

10.45am *Morning Tea, Brisbane Bandits*

11.05am **Anne Holm (Denmark) In Home Care**

11.35am Panel discussion

**Facilitator:** Rebecca Hall **Panelists:** Lynne Foley, Liz Isenring, Trevor Ganley

12.20pm Bernard Salt

12.50pm *Lunch, Poster Presentations, Exercises by Restart EP*

1.50pm **Lena Gan and Daniella Greenwood**  
**Masters or Ageing/Benefits of different relationship models**

2.20pm Panel discussion

**Facilitator:** Cheryl Vardon **Panelists:** Jacyl Shaw, Ross Humphries, Marcus Ganley

3.05pm *Afternoon Tea - Varsity Lakes College String Quartet*

3.25pm **Oh Duk Man (Korea)**  
**Current status of aged care in Korea and SST's long-term development**

3.55pm Panel discussion

**Facilitator:** Linda Brown **Panelists:** Patrick McIntosh, Peter McMahon,  
Petrina Fraccaro

4.40pm **Showcase** - Professor Kerry Reid-Searl - Masked Ed

4.55pm Farewell - **Linda Brown** and **Kay Ganley, CEO, CHARLTON BROWN®**





# CHARLTON BROWN®

## 30th Reunion Celebration



**Friday Evening 22 April**

Celebrate the magic as we ***Reconnect - Reunite - Remember***

Share your stories

See photographs of 30 years of CHARLTON BROWN®

### VENUE

Mantra, Gold Coast

### TIME

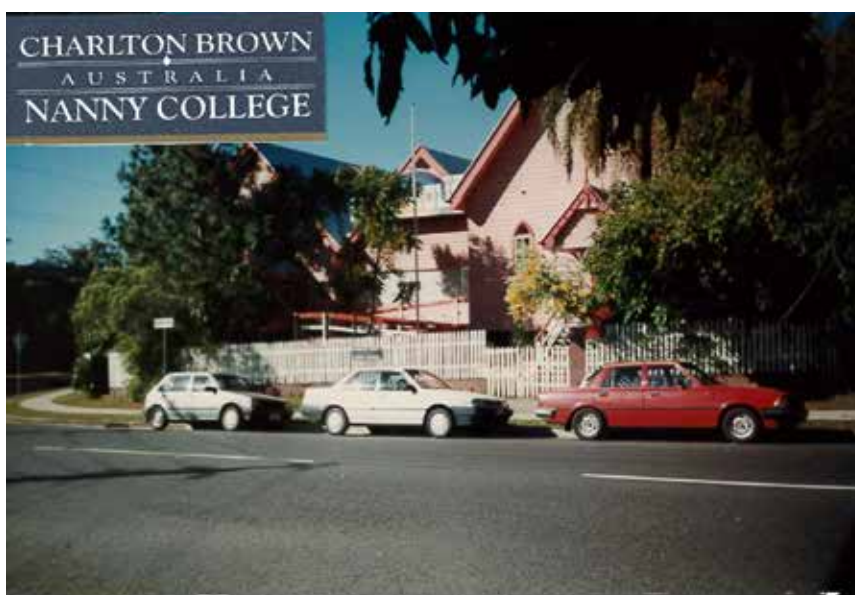
6.00pm - 8.00pm

### COST

\$50 per person

### BOOKINGS

[gws.charltonbrown.com.au](http://gws.charltonbrown.com.au)



*Complimentary crèche available*

Please email your requirements to [agency@charltonbrown.com.au](mailto:agency@charltonbrown.com.au) or phone **(07) 3216 0288**



# PROGRAM

**Saturday 23 April - DAY 3**

**Master Class** (9.45am - 12:15pm) City Hall, Brisbane, Queensland

This one-day Master Class is ideal for Vocational Education Training Providers. The Master Class will feature senior thought leaders from the following Australian Vocational Education organisations.

Master of Ceremonies **Chris Evason**, Managing Director,  
Professional International Education Resources (PIER)

- 9.45am Official opening by The Hon. Grace Grace MP**  
Minister for Employment and Industrial Relations, Minister for Racing and Minister for Multicultural Affairs and member for Brisbane Central
- 10.00am Address from Councillor Vicki Howard**, Central Ward
- 10.00am Address from Kay Ganley, CEO, CHARLTON BROWN®**
- 10.15am Suzanne Wauhope, Deputy Director-General**  
**Training and Skills**, Department of Education and Training
- 10.45am Kerri Buttery, Director of VET Content Development**, VELG Training
- 11.00am ACPET - Paula Johnson**,
- 11.15am Kay Ganley, CEO, CHARLTON BROWN®**  
**Sue Freeman, Director**, First Impression Resources and Director,  
Australian Retail College (India)
- 11.45am Luke Latimer, Head of Digital Operations**, IES
- 12.00pm Closing remarks from Kay Ganley**

**Sponsored by**



Program is subject to change without notice.





# NAME BADGES INTERNATIONAL

## THE EXPERTS IN THE INDUSTRY

- ✓ Preferred supplier of name badges across a wide range of industries including aged care.
- ✓ Made using the latest technology available to ensure your badges are of the highest quality.
- ✓ Visit our website to view our range of professional looking name badges.



**Order online to receive your 10% discount**

Coupon code: GWS2016



**02 8003 5046**

Suite F Level 1 Octagon, 110 George Street, Parramatta,  
NSW 2150 Australia



[www.namebadgesinternational.com.au](http://www.namebadgesinternational.com.au)  
[sales@namebadgesinternational.com.au](mailto:sales@namebadgesinternational.com.au)



**078-241-5877**

Yubinbango 651-0084, Chuo-ku, Kobe Isobedori 4-2-26  
New Furong Building 1f, Japan



[www.namebadgesinternational.jp](http://www.namebadgesinternational.jp)  
[sales@namebadgesinternational.jp](mailto:sales@namebadgesinternational.jp)



# CareerOne

## is a trusted and relevant resource

The CareerOne print section of The Saturday Courier-Mail is a key employment and labour force guide.

Around 6 in 10 readers say they trust the employment advice and articles they read in CareerOne\*.

For more information on reaching this engaged audience with CareerOne, contact the team at [newsqldcareers@news.com.au](mailto:newsqldcareers@news.com.au)



# SPONSORS

Platinum Sponsors

Social Welfare Corporation  
Shinko Fukushimai



CHARLTON BROWN®

Gold Sponsor,  
Media Partner and  
Program Sponsor

**The Courier Mail**

Thank you to all our generous sponsors



Thank you to all our other  
generous supporters



AUSTRALIAN  
PERSONAL  
SAFETY



CHARLTON BROWN CARE

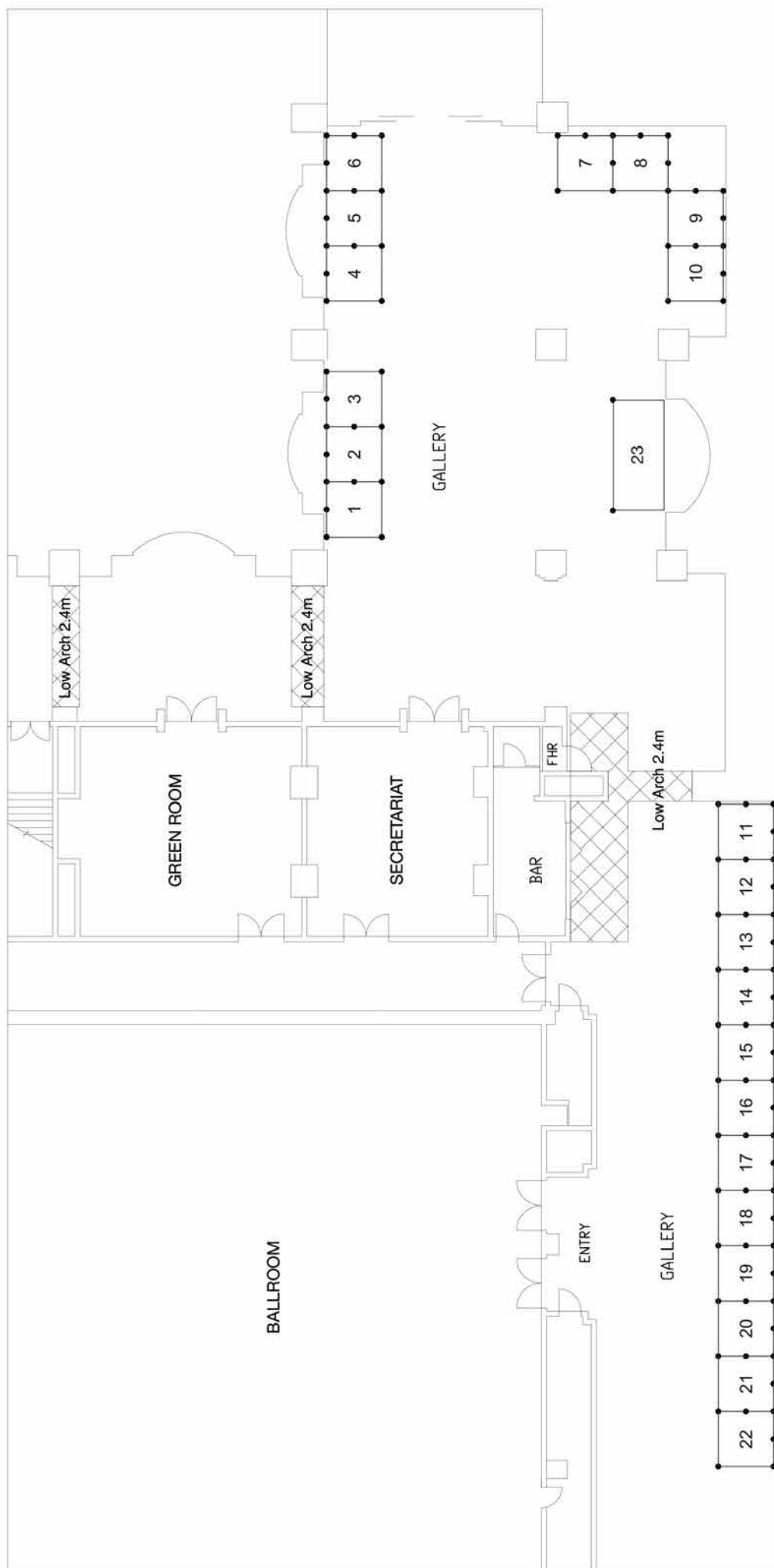
[cbcure.com.au](http://cbcure.com.au)

**Health and Aged Care  
Personnel Services**

Sourcing | Placing | Managing



**Ph: +61 7 3216 0288**  
**Making a Difference**



1	VETEA
2	CHARLTON BROWN® College
3	PBF Australia
4	In Home Care Solutions Pty Ltd
5	Griffith University
6	CHARLTON BROWN® Care
7	TAFE Queensland
8	The University of Melbourne
9	Restart Exercise Physiology
10	Shinko Fukushimai
11	CHARTLON BROWN® Nanny Agency
12	Paro Therapeutic Robot
13	Queensland Skills and Education Consortium
14	BUSY At Work
15	FitEducation
16	Trade and Investment Queensland
17	James Cook University Brisbane
18	Velg Training
19	Australian Personal Safety
20	Somerville Funerals
21	ACPET
22	Savings Lives Australia Wide
23	Laureate Australia



## EXCLUSIVE 10% OFF on presentation of this voucher



NOT TO BE USED IN CONJUNCTION WITH ANY OTHER OFFER.  
CONDITIONS MAY APPLY. OFFER VALID TO 30/09/2016

LEVEL 1, PARADISE CENTRE, SURFERS PARADISE. PHONE 07 5527 5100  
www.australianshootingacademy.com.au

**Gold Coast**  
TOURIST GUIDE



**Gold Coast**  
TOURIST MAGAZINE

## 10% DISCOUNT

NOT TO BE USED IN CONJUNCTION WITH ANY OTHER OFFER. CONDITIONS APPLY.  
BOOK ONLINE OR PHONE USING CODE TMA610. VALID TUESDAY-FRIDAY SHOWS ONLY.



OFFER VALID TO 30/09/2016

1 Hooker Boulevard, Broadbeach  
1800 DRACULAS  
www.draculas.com.au

**Gold Coast**  
TOURIST GUIDE



**Gold Coast**  
TOURIST MAGAZINE

## ADULTS AT KIDS PRICES! All guests \$35 with this voucher (SAVE \$14)



NOT TO BE USED IN CONJUNCTION WITH ANY OTHER OFFER.  
DOES NOT INCLUDE TREETOP CHALLENGE.  
CONDITIONS APPLY. OFFER VALID TO 31/07/2016

28 Tomewin Street, Currumbin, 4223. Phone 1300 886 511 www.cws.org.au

**Gold Coast**  
TOURIST GUIDE



**Gold Coast**  
TOURIST MAGAZINE

## 10% DISCOUNT

OR TAKE THE ESCAPE HUNT CHALLENGE  
& SAVE 30%



NOT VALID WITH ANY OTHER OFFER. USE CODE: GCTM10 WHEN BOOKING ONLINE.  
BOOKINGS ARE ESSENTIAL. CONDITIONS MAY APPLY. VALID TO 30/09/16.

2/162 Scarborough Street, Southport 4215. Phone 07 5532 4180.  
www.goldcoast.escapehunt.com

**Gold Coast**  
TOURIST GUIDE



**Gold Coast**  
TOURIST MAGAZINE

**Gold Coast**  
TOURIST GUIDE



**Gold Coast**  
TOURIST MAGAZINE

## \$5 OFF MEAT HOOK ZIP COASTER RIDE

OFFER VALID ANY DAY SUBJECT TO AVAILABILITY FOR UP TO 4 PEOPLE.  
CANNOT BE USED WITH ANY OTHER OFFER. EXPIRES 30/09/16.



88 -108 Siganto Drive, Helensvale.  
Easy access just off the M1.  
Phone 07 5519 3999  
www.gameovergc.com.au

**Gold Coast**  
TOURIST GUIDE



**Gold Coast**  
TOURIST MAGAZINE

## 10% DISCOUNT



PRESENT VOUCHER AT HAUNTED HOUSE ATTRACTION ENTRY TO REDEEM.  
NOT TO BE USED IN CONJUNCTION WITH ANY OTHER OFFER.  
CONDITIONS APPLY. OFFER VALID TO 30/09/2016

3177 Surfers Paradise Blvd, Surfers Paradise. Phone (07) 5592 5534 www.draculashauntedhouse.com.au

**Gold Coast**  
TOURIST GUIDE



**Gold Coast**  
TOURIST MAGAZINE

**Gold Coast**  
TOURIST GUIDE



**Gold Coast**  
TOURIST MAGAZINE

## \$10 OFF iFLY INTRO PACKAGE

VOUCHER MUST BE PRESENTED ON CHECK-IN. VALID FOR 1 PERSON ON iFLY INTRO PACKAGE ONLY.  
NOT VALID WITH ANY OTHER OFFER, EXCLUDES GIFT CERTIFICATE. BOOKINGS SUBJECT TO AVAILABILITY. TERMS AND CONDITIONS APPLY.  
USE CODE: GC\_INFOMAP32 MUST BOOK ONLINE. OFFER VALID TO 31/03/2017.



3084 Surfers Paradise Blvd, Surfers Paradise.  
Book Now 1300 366 364.  
www.iFly.com.au

## 10% OFF ADULT & CHILD ENTRY

NOT TO BE USED IN CONJUNCTION WITH ANY OTHER OFFER. CONDITIONS APPLY.

## 10% OFF ALL MERCHANDISE

NOT TO BE USED IN CONJUNCTION WITH ANY OTHER OFFER. CONDITIONS APPLY.



OFFER VALID TO 30/09/2016

Chevron Renaissance, Surfers Paradise Blvd, Surfers Paradise.  
Phone (07) 5526 8935 www.infinitygc.com.au

**Gold Coast**  
TOURIST GUIDE



**Gold Coast**  
TOURIST MAGAZINE

**Gold Coast**  
TOURIST GUIDE



**Gold Coast**  
TOURIST MAGAZINE

## 10% DISCOUNT ON PRESENTATION OF THIS VOUCHER

CONDITIONS APPLY. OFFER VALID MONDAY TO FRIDAY FOR UP TO 4 PEOPLE. KIDS FROM \$30 & ADULTS FROM \$55. CANNOT BE USED WITH ANY OTHER OFFER.

OFFER VALID TO 30/09/2016



20 Mudgee Street, Kingston Qld 4114  
Directions from the Gold Coast - travelling North on the Pacific Hwy (M1), take the Logan Motorway (Exit 31), 2nd Exit - left to Kingston-Beenleigh Rd - Logan Central, turn right at Station Rd, turn right at Kingston Rd, then follow the signs at the roundabout.  
Phone (07) 3826 2222  
www.kingstonpark.com.au



## ADULTS AT CHILD'S PRICE

VOUCHER MUST BE SURRENDERED AT TIME OF PURCHASE.  
VALID BEFORE 6PM. CONDITIONS APPLY. VALID TO 30/09/16.

Cnr Palm Ave & Surfers Paradise Blvd, Surfers Paradise  
Phone 07 55 702 700

**Gold Coast**  
TOURIST GUIDE



**Gold Coast**  
TOURIST MAGAZINE

**Gold Coast**  
TOURIST GUIDE



**Gold Coast**  
TOURIST MAGAZINE

## \$2 OFF PER ADULT ★ \$1 OFF PER CHILD

DISCOUNT OFF ADULT & CHILDREN NORMAL ADMISSION PRICES. PRESENT VOUCHER.  
NOT TO BE USED IN CONJUNCTION WITH ANY OTHER OFFER. OFFER VALID TO 30/09/2016



"SOUL", Cavill Mall, Surfers Paradise. Phone 07 5592 0040. www.surfersparadise.ripleys.com

## BUY ONE GET ONE HALF PRICE



\*Purchase a full priced adult or child ticket and receive the second ticket of equal or lesser value half price, upon presentation of this voucher. Valid for one person per voucher, not valid with any other offer. Excludes SkyPoint Climb. Valid until 30/09/16.  
See website for operating hours and entry conditions. Code: Q\_GCTM PAY Q\_GCTM 50%

Sky Point Climb, Surfers Paradise Boulevard, Surfers Paradise. Phone 07 5680 7700  
www.skypointclimb.com.au

**Gold Coast**  
TOURIST GUIDE



**Gold Coast**  
TOURIST MAGAZINE

**Gold Coast**  
TOURIST GUIDE



**Gold Coast**  
TOURIST MAGAZINE



## CHARLTON BROWN® BOARD MEMBERS

---

Chairman - Trevor Ganley

Executive Directors - Kay Ganley, Marcus Ganley, Petrina Fraccaro

Non Executive Director - David Conry

## VOLUNTEERS

---

Thank you to our great volunteer team lead by Samantha O'Dwyer

John Boardman

Noelene Boardman

Susie Brown

Kelly Campbell

Glenda Fraccaro

Mario Fraccaro

Rose Greig

Min Woo Jang

Margaret Kempin

Philip Kerr

James Silva

Justine Turvey

Jodie Taylor

Sov Tuon

Peter Talbot

Sue Menzies

Jan Nolan

Long Vu

Nathan Bach

Troy Scott

Angela Boylan

Brayden White

Brian Nolan

Carmel Harrison

Cesar Arias

Christine Kerr

Eric Kempin

Michael Larter

Sally Freestun

Lin Yuan

Julie Yamamoto

Rina Achiwa

Pablo Vicioso

Kunga Barphungpa

Linh Vu

George Shaw

Betty Shaw

Mary Mourgelas

Emi Hall

Gayle Sparrow

Gemma Nolan

Samantha O'Dwyer

Greg Stenzel

Rizaldy Mutuc

Nikki Canedo

Su-Jin Yap

Louise Booth

John Woodford

Kanae Yamagata

Please accept our apologies if we have left anyone off the list, we really appreciate everyone who has helped.



# 2016 NATIONAL VET CONFERENCE GOLD COAST

### REGISTER NOW!

Join the Velgy Bunch this year in September as we Celebrate the 10th annual National VET Conference in the Gold Coast! Don't miss out on Australia's largest VET event, while visiting Australia's beautiful east coast, famed for its long sandy beaches and exciting tourist attractions.

### VENUE:

Gold Coast Convention &  
Exhibition Centre, Queensland

### DATES:

Master Classes - Wednesday 14th September 2016  
Day 1 - Thursday 15th September 2016  
Day 2 - Friday 16th September 2016



### CONTACT

07 3866 0888

conference@velgtraining.com

velgtraining.com



# Showcasing Health & Aged Care in Queensland



**“The healthcare industry is forecast to employ 55,700 more Queenslanders by the end of the decade\*. As one of Australia’s leading recruitment platforms, CareerOne puts the spotlight on this trend with regular stories about working in healthcare today, while at the same time providing credible and trusted information on how to develop and advance employment opportunities in this sector for the future.”**

**Cara Jenkin,**  
National CareerOne Editor.

**CareerOne.**  
Providing vital resources for job seekers and students in the health and aged care sector, both now and into the future.

Reach a highly engaged audience of 337,000 people every 4 weeks with CareerOne in The Saturday Courier-Mail. ^

**For more information on reaching this engaged audience with CareerOne, contact the team at [newsqldcareers@news.com.au](mailto:newsqldcareers@news.com.au)**

**The Courier-Mail**

**careerone®**